

# EQUIPPING EQUIPPERS!

WWW.CADREMINISTRIES.COM

Bill and Stacy partnering with Josh and Sara Burnett, church planters in Maryland! Bill did Cadre's *Evangelism Is Relationships* training.



Bill with Ron Klabunde, church planter in Virginia, who is taking his launch team through Cadre's *Ministry Is Relationships*

JESUS EQUIPPED EQUIPPERS: "HE APPOINTED TWELVE—DESIGNATING THEM APOSTLES—THAT THEY MIGHT BE WITH HIM AND THAT HE MIGHT SEND THEM OUT..." MARK 3:14

## God, You, & Cadre: Our Adventure Together!

We had a wonderful missionary journey out East in August. God's hand was on our ministry in a powerful way. We had an amazing God-favored time of encouraging and equipping church planters. One church planter wrote:

*"Cadre training is perfect for church planting. I am using Ministry Is Relationships and Evangelism Is Relationships to develop the launch team of Restore Community Church. Cadre has the practical training that church planters need. Thank you for*

*training me as a Cadre trainer to equip the people of a new church."*

That's exactly what Cadre is all about: Equipping churches to make volunteers wildly successful in loving and serving Jesus Christ!



DEVELOPING DISCIPLEMAKING TRAINING IN MINNESOTA!



EQUIPPING EQUIPPERS TO EQUIP VOLUNTEERS!



ABOUT 75 STUDENTS TRUST CHRIST IN WISCONSIN!



# Thank you for making an eternal difference by partnering with God, us, and Cadre Ministries!

Bill,  
I truly had a fantastic time at the *Becoming a High Impact Teacher* training on Saturday. Thank you for including me in for this road trip. The six hours in the car with you and Jeremy and the four hours of training were extremely valuable. I'm still reflecting on all of our great discussions—and how to apply what we discussed. I'm having the time of my life. Thanks for everything. I look forward to each time we interact.  
—Eric, Pastor to Families & Children

Because Cadre equips the equippers, your partnership is multiplied over and over as those we equip continue to equip others—in 2 Timothy 2:2 fashion. Your faithful prayers and generous financial partnership make Cadre possible and powerful for God's glory. Thank you so much! Only Heaven will be able to reveal just how many

people you have affected for eternity.

### The Big Question

One of the most common questions we get asked these days is: "Is Cadre feeling the effects of the economy?" The answer is, "Yes." Any financial help you send our way would bless and encourage us so we can continue to bless and encourage others.

### GIVE ONLINE AT:

[WWW.CADREMINISTRIES.COM/STORE](http://WWW.CADREMINISTRIES.COM/STORE)

### OR MAIL YOUR GIFT TO:

CADRE MINISTRIES  
P.O. BOX 278  
SYCAMORE, IL 60178

### Stay in the Allison Loop

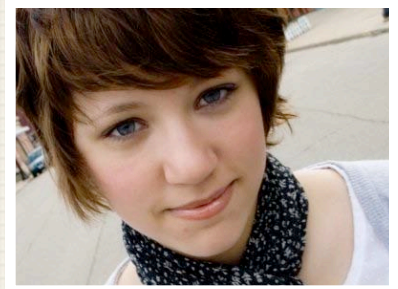
[www.twitter.com/billc323](http://www.twitter.com/billc323)

[www.facebook.com/billallison1](http://www.facebook.com/billallison1)

[www.cupojoewithbill.blogspot.com](http://www.cupojoewithbill.blogspot.com)



## ON THE FAMILY FRONT...



EMILY IS NOW AT MOODY BIBLE INSTITUTE



BILL IS PLAYING VARSITY FOOTBALL FOR IVC



SADEY & LIBBY WILL BE GOING TO A DENTIST



WITH EMILY GONE, JOSEY IS MOVING INTO AUBREY'S ROOM